

Surveillance Software – WalkGuard 7.0

User Manual

1. Introduction

The WalkGuard 7.0 product is Windows based (compatible with Windows 2000/ XP/ Vista) applications that manage networked IP/ Wi-Fi cameras.

The WalkGuard 7.0 allows you to view multiple cameras (1/ 4/ 9/ 16) and record in DivX format, and includes motion detection function and alarm functions. The WalkGuard 7.0 is an ideal solution for IP/ Wi-Fi camera.

2. Features

1. DivX Capture (v6.5.1)
2. Video File Management: Video file database and playback control.
3. Storage Recyclable: When running out of disk space, files with the earliest date will be overwrite automatically.
4. Motion Detection: Detect any movement in the mask area and invoke the alarm as soon as movement is detected.
5. Supports 4/ 9/ 16 cameras preview and record.
6. Multi-Languages OSD: English/ French/ German/ Italian/ Dutch/ Spanish/ Russian/ Japanese/ Traditional Chinese.
7. Compatible with **Windows 2000, XP and Vista.**

	Preview	Recording
Resolution	640 x 480	NTSC:320 x 240
Frame Rate	15 – 30 frames	15 – 25 frames
HD requirement	3~5GB /24hour	

3. System Requirements

1. Operating System: Microsoft Windows XP/ Vista.
2. **Processor**
 - Pentium 4 2.4GHz or above (running on Windows XP/ Vista 32bit)
 - Pentium D 3GHz or above (running on Windows Vista 64bit)
3. **RAM**
 - 512MB RAM or above (running on Windows XP/ Vista 32bit)
 - 1GB RAM or above (running on Windows Vista 64bit)
4. 4 GB HD space

4. Software Installation

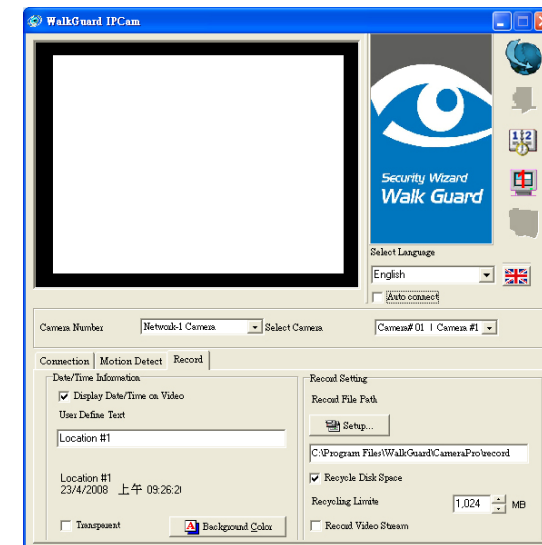
4.1 Install the Software

Insert the CD Driver to your CD-ROM driver, and a pop-up window will appear. Click the “**Install WalkGuard**” item to install.



4.2 Starting the WalkGuard

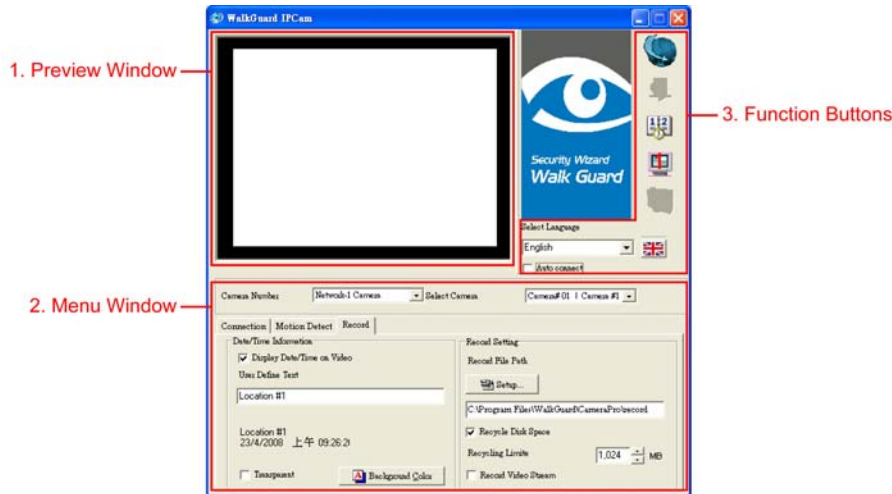
Execute the **WalkGuard** on the desktop, and the following screen is displayed.



5. Using the WalkGuard

5.1 Interface

There are three parts: **Preview Window**, **Menu Window** and **Function Button**.



5.2 Menu Window

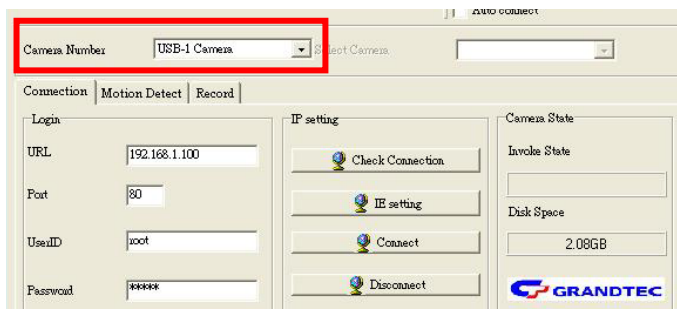
There are three main options for setup: **Connection**, **Motion Detect** and **Record**.

5.2.1 Connection

■ Login (for setting the camera connection)

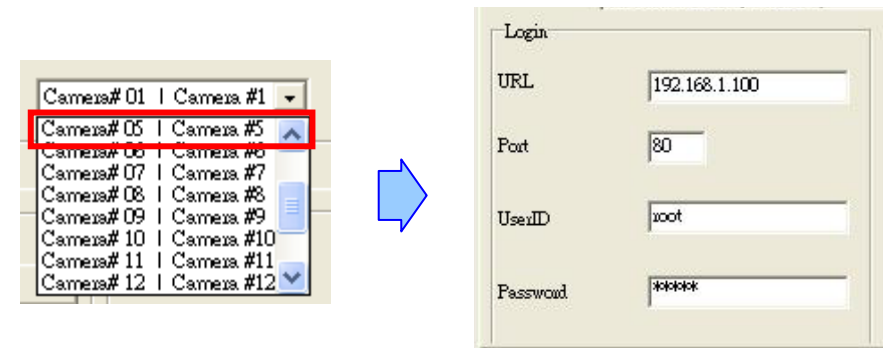
Step 1: Select the number of cameras (1/ 4/ 9/ 16) and camera mode (USB Cam/ Internet Cam).

NOTE: The Grand Pan/ Tilt IP or Wi-Fi Camera not support USB camera mode.



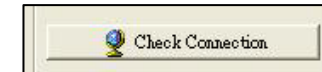
Step 2: Enter your camera's **IP Address**, **Port**, **User ID** and **Password**. If there is more than one camera, please select and set the others.

Ex. Select Camera 5, and enter the **IP Address**, **Port**, **User ID** and **Password**.

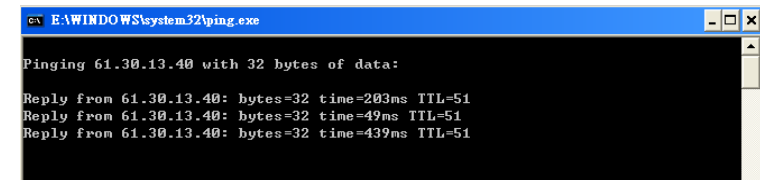


■ IP Setting

Check Connection: Click the **Check Connection** button to confirm the IP address conflicts with the camera over the network.

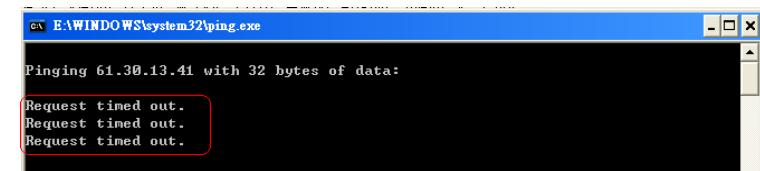


- If the camera set online, you will see the following:

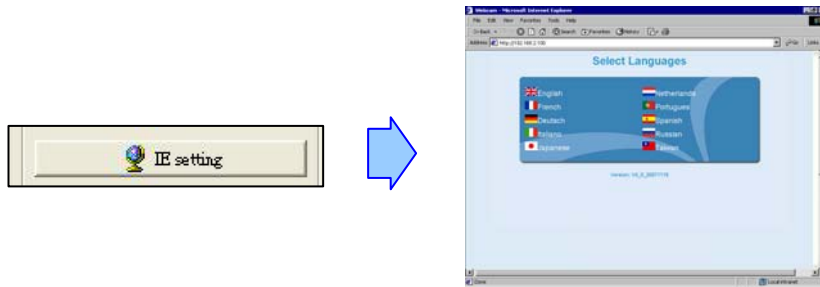


- If the connection has failed, you will see the following:

NOTE: Refer to Camera's User Manual for more detail to solve the problem.



IE Setting: Click the button to open the **Web Configuration** of the camera directly.
(refer to Camera's User Manual for more detail about Web configuration settings)



Connect: Click the button to connect the camera directly, the image of camera will display in the preview window.



Disconnect: Click the button to disconnect the camera immediately.



■ Camera State

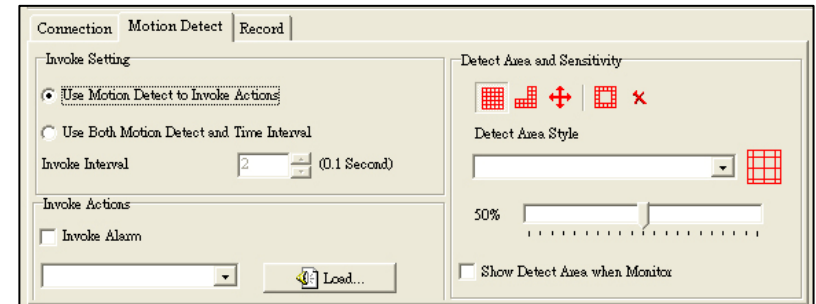
Invoke State: Display the system state (ready or recording).

Disk Space: Display the disk space remaining.



5.2.2 Motion Detect

NOTE: Connect to a camera before setting the Motion Detect.



■ Invoke Setting (set the recording mode)

Use Motion Detect to Invoke Actions: Start recording while detecting motion.

Use Both Motion Detect and Time Interval: Start recording while detecting motion, and the system will also record at the interval time that you set (you need set the interval time).

■ Invoke Action

To enable/ disable the invoke alarm, and select the kind of sound. You can also click the **Link** to select your sound (supports wav format).

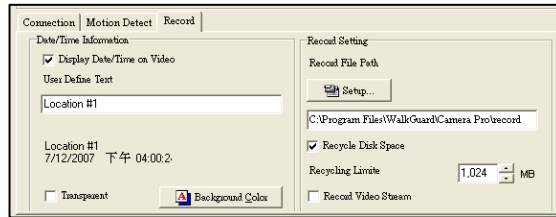
Detect Area and Sensitivity

	Click the icon to directly add detect area on the preview window.
	Click the icon to directly remove detect area on the preview window.
	Click the icon to select all block
	Click the icon to invert detect area.
	Click the icon to clear all detect areas.

Detect Area Style: Select the style of detect area.

Motion Sensitivity: 0% (least sensitive)~ 100% (least sensitive)

5.2.3 Record



■ Date/ Time Information

Display Date/ Time on Video: Turn on/ off the message of date and time on the left-up of the video.

User Default Text: Enter the title for each camera.

Transparent: Select the background color of text.

■ Record Setting

Record File Path: Click the **Setup** icon to change the folder path.

Recycling Disk Space: The earliest video file will be deleted when running out the recycling disk space that you set.

Record Video Stream: Start/ stop recording immediately.

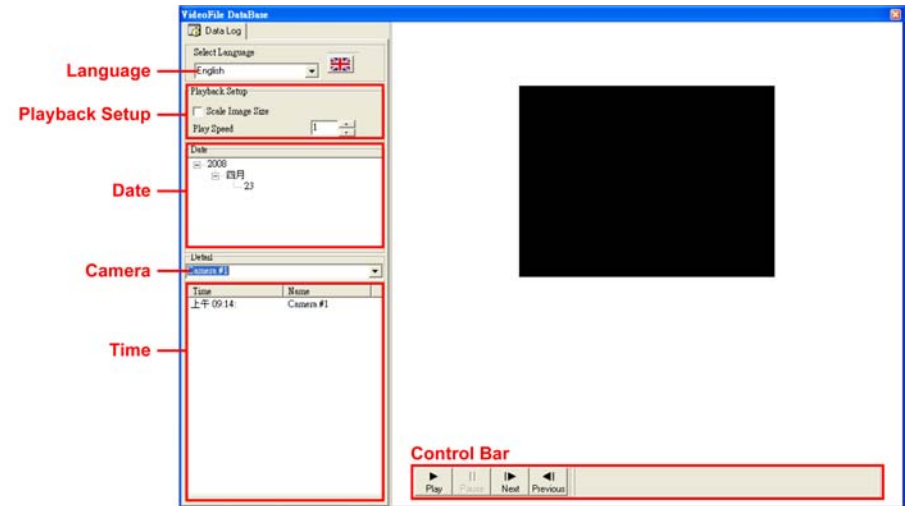
5.3 Function Buttons



- **Language:** Select the OSD language.
- **Auto Connect:** Enable/ disable the auto connect function while starting the system.
- **Connect:** To connect the camera.
- **Disconnect:** To disconnect the camera.
- **Database:** To open the Database window (refer to 5.4).
- **POP Window:** To open a 1/ 4/ 9/ 16 preview window (full screen).
- **Snapshot:** To capture the current image and save to bmp format.

5.4 Using the Database

This application software is a powerful database manager. All the recorded files will be stored in this database. You can play the recording file. The invoke action (motion detection or time interval) will create a new log and record on the tree manager.



- **Language:** Select the OSD language.
- **Playback Setup**
 - **Scale Image Size:** Adjust the screen size of playback.
 - **Play Speed:** Adjust the speed of playback.
- **Date:** Select the date (year/ month/ day).
- **Camera:** Select the camera you want to play.
- **Time:** Select the time you want to play.
- **Control Bar:** Use the buttons for playback.

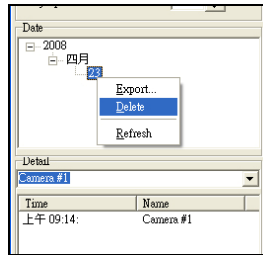
5.4.1 Playing the File

Select the **Date**, **Camera** and **Time** you want to play, and click the **Play** button to play.

Use the other buttons (pause/ next/ previous) to control while playing.

5.4.2 Delete/ Export the Files

Right Click on the **Year**, **Month**, **Day** or **Time** and a pop-up window will appear.



- Select the “Export” item to export this file to another location.
- Select the “Delete” item to delete this file.
- Select the “Refresh” item to refresh the Data Log.

NOTE:

1. If you want export or delete all the files of the year, right click on the **Year** directly, and select **Export** or **Delete** item.
2. If you only want export or delete one of the files, right click on the **Time** directly, and select **Export** or **Delete** item.